



# THE MORNING GLORY

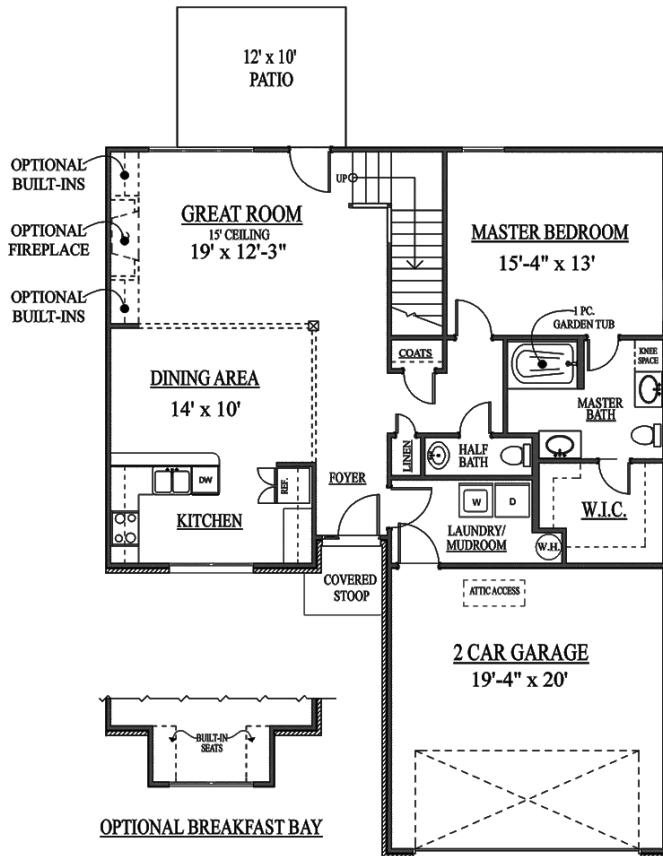
Ask your new homes specialist about the many designer features available.



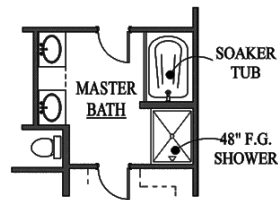
10/20/14

# The Morning Glory

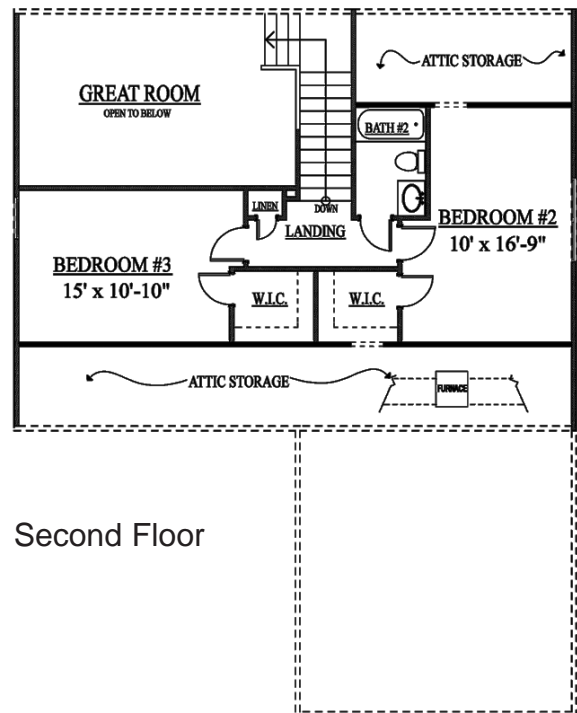
1753 Square Feet



First Floor



OPTIONAL MASTER BATH



Second Floor



10/20/14

3445 Richmond Road, Suite 200, Lexington, Kentucky 40509, Office, (859) 277-1600  
ALL FEATURES, DESIGNS, PLANS, SPECIFICATIONS, AND PRICES ARE SUBJECT TO CHANGE WITHOUT NOTICE